



AULB959-FLAT-1L Adjustable

SPECIFICATION

HOUSING :HIGH COLD-ROLLED STEEL SHEET FORMED BY HIGH QUALITY MACHINES

SURFACE TREATMENT :ION-PHOSPHATE AND ANTI-RUST FINISHED WITH UV RESISTANT POLYESTER POWDER COAT

REFLECTOR :HIGH GRADE ANODIZED ALUMINIUM (SPECULAR)

DIFFUSER :VANDAL RESISTANT TEMPERED GLASS (FROSTED)

COLOR :WHITE+BLACK

PROTECTION CLASS :PROTECTION CLASS EQUIVALENT TO IP 44

INSTALLATION :RECESS CONCEAL CEILING

APPLICATION :OFFICE BUILDING, HOSPITAL, DEPARTMENT STORE HOTEL, RESTAURANT, GOVERNMENTAL BUILDING SHOP, RESIDENTIAL, ETC.

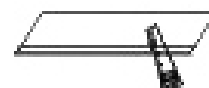
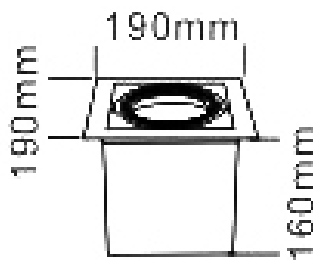
MODEL	DIMENSION(mm.)			LAMP	LUMEN	LAMP TYPE
	Ø	W	H	HOLDER	(MAX)	
AULB959-FLAT-1L	190 x 190	170 x 170	160	E27 / PAR30		



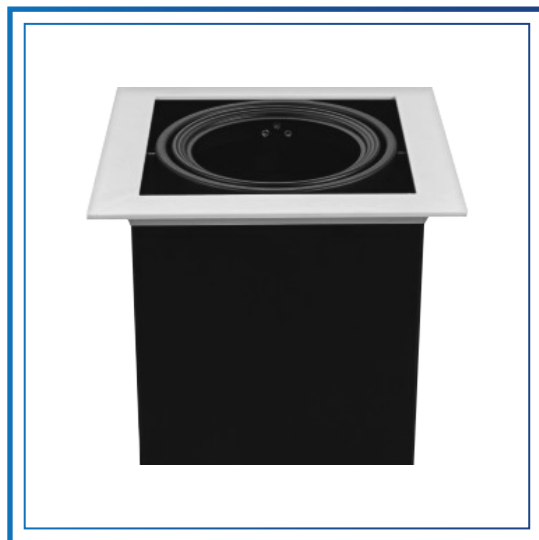
PAR30



AR11



316x150mm
T59-FLAT-1L



AULB959-FLAT-2L Adjustable

SPECIFICATION

HOUSING :HIGH COLD-ROLLED STEEL SHEET FORMED BY HIGH QUALITY MACHINES

SURFACE TREATMENT :ION-PHOSPHATE AND ANTI-RUST FINISHED WITH UV RESISTANT POLYESTER POWDER COAT

REFLECTOR :HIGH GRADE ANODIZED ALUMINIUM (SPECULAR)

DIFFUSER :VANDAL RESISTANT TEMPERED GLASS (FROSTED)

COLOR :WHITE+BLACK

PROTECTION CLASS :PROTECTION CLASS EQUIVALENT TO IP 44

INSTALLATION :RECESS CONCEAL CEILING

APPLICATION :OFFICE BUILDING, HOSPITAL, DEPARTMENT STORE HOTEL, RESTAURANT, GOVERNMENTAL BUILDING SHOP, RESIDENTIAL, ETC.

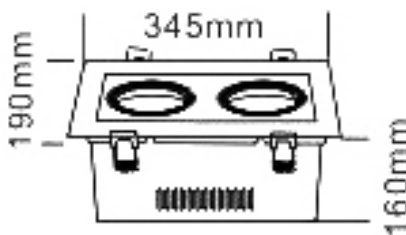
MODEL	DIMENSION(mm.)			LAMP	LUMEN	LAMP TYPE
	Ø	W	H	HOLDER	(MAX)	
AULB959-FLAT-2L	345 x 190	320 x 170	160	E27 / PAR30		



PAR30



AR11



320x170mm
T59-FLAT-2L