

**AULB-D980-SQ-C/120**

### SPECIFICATION

HOUSING :HIGH COLD-ROLLED STEEL SHEET FORMED BY HIGH QUALITY MACHINES

SURFACE TREATMENT :ION-PHOSPHATE AND ANTI-RUST FINISHED WITH UV RESISTANT POLYESTER POWDER COAT

REFLECTOR :HIGH GRADE ANODIZED ALUMINIUM (SPECULAR)

DIFFUSER :VANDAL RESISTANT TEMPERED GLASS (FROSTED)

COLOR :BLACK, GREY, MATT WHITE, SAND WHITE

PROTECTION CLASS :PROTECTION CLASS EQUIVALENT TO IP 44

INSTALLATION :SURFACE MOUNT

APPLICATION :OFFICE BUILDING, HOSPITAL, DEPARTMENT STORE HOTEL, RESTAURANT, GOVERNMENTAL BUILDING SHOP, RESIDENTIAL, ETC.

MODEL	DIMENSION(mm.)		LAMP	LUMEN	LAMP TYPE
	Ø	H	HOLDER	(MAX)	
AULB-D980-SQ-C/120	80 x 80	120	G5.3 / GU10		



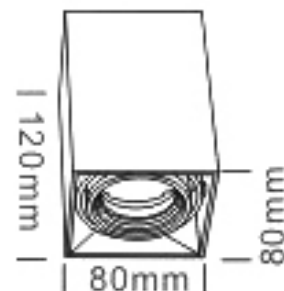
LED Module

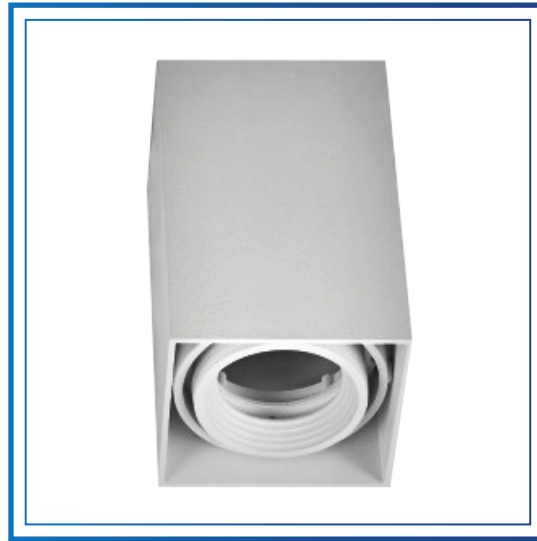


GU10



G5.3





**AULB-D980-SQ-C/145**

### SPECIFICATION

<p><b>HOUSING</b> :HIGH COLD-ROLLED STEEL SHEET FORMED BY HIGH QUALITY MACHINES</p> <p><b>SURFACE TREATMENT</b> :ION-PHOSPHATE AND ANTI-RUST FINISHED WITH UV RESISTANT POLYESTER POWDER COAT</p> <p><b>REFLECTOR</b> :HIGH GRADE ANODIZED ALUMINIUM (SPECULAR)</p> <p><b>DIFFUSER</b> :VANDAL RESISTANT TEMPERED GLASS (FROSTED)</p>	<p><b>COLOR</b> :BLACK, GREY, MATT WHITE, SAND WHITE</p> <p><b>PROTECTION CLASS</b> :PROTECTION CLASS EQUIVALENT TO IP 44</p> <p><b>INSTALLATION</b> :SURFACE MOUNT</p> <p><b>APPLICATION</b> :OFFICE BUILDING, HOSPITAL, DEPARTMENT STORE HOTEL, RESTAURANT, GOVERNMENTAL BUILDING SHOP, RESIDENTIAL, ETC.</p>
---	---

MODEL	DIMENSION(mm.)		LAMP	LUMEN	LAMP TYPE
	Ø	H	HOLDER	(MAX)	
AULB-D980-SQ-C/145	80 x 80	145	G5.3 / GU10		



LED Module



GU10



G5.3

