



AUF B1

SPECIFICATION

HOUSING :HIGH GRADE COLD-ROLLED STEEL SHEET FORMED BY HIGH QUALITY MACHINES

SURFACE TREATMENT :ION-PHOSPHATE AND ANTI-RUST FINISHED WITH UV RESISTANT WHITE POLYESTER POWDER COAT

WIRES :THW, TIS.11-1988 STANDARD

LAMP HOLDER :SPRING LOCKED TYPE HIGH-HEAT RESISTANCE, TIS344-1987 STANDARD
:ROTOR LOCKED TYPE HIGH-HEAT RESISTANCE, TIS344-1987 STANDARD

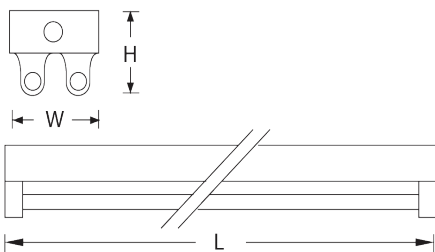
STARTER HOLDER :ROTOR LOCKED TYPE HIGH-HEAT RESISTANCE, TIS344-1987 STANDARD

PROTECTION CLASS :PROTECTION CLASS EQUIVALENT TO IP 20

INSTALLATION :SURFACE MOUNT OR SUSPEND MOUNT

APPLICATION :FACTORY, WAREHOUSE, SHOP, RESIDENTIAL, CAR PARK, ETC.

COMPLETE SET* :INCLUDING BALLAST, LAMP, STARTER NORMAL FOR T8 LAMP
:INCLUDING ELECTRONIC BALLAST FOR T5 LAMP



MODEL	LAMP	DIMENSION(mm.)			WEIGHT (kg.)
		L	W	H	
AUF B1-220	2 x 18W. T8	635	122	85	2.85
AUF B1-240	2 x 36W. T8	1245	122	85	4.90
AUF B1-232	2 x 32 W.T8	1245	122	85	4.90

INSTALLATION : SURFACE MOUNT OR SUSPEND MOUNT